

PRODUCT DATA SHEET

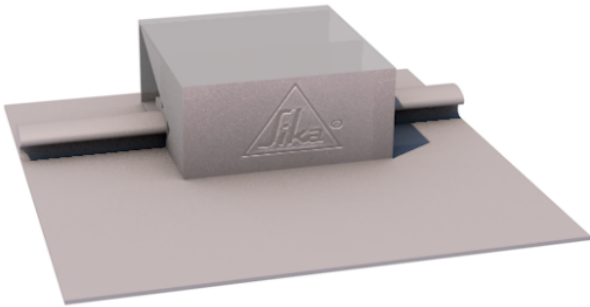
SikaRoof® Base PVC

(formerly 02-ZH_CN BASE PVC)

UNIVERSAL CONNECTION POINT FOR ROOF MOUNTED FACILITIES

DESCRIPTION

SikaRoof® Base PVC is an aluminum / PVC assembly.



USES

Universal connection point for fixing without penetrating the roof membrane. (Aircon, Ducting, Machines and Equipment).

Light weight roof mounted facilities to the exposed Sarnafil® and Sikaplan® PVC roofing membrane.

CHARACTERISTICS / ADVANTAGES

- Excellent resistance to weathering, including permanent UV irradiation
- Excellent weldability
- Fast installation
- Easy and ready to use
- No penetrations to the PVC roofing membrane
- Recyclable

PRODUCT INFORMATION

Product declaration	Extruded, modified polyvinyl chloride (PVC) compound / extruded aluminium	
Chemical base	Aluminium alloy and PVC	
Packaging	4 sets / box	
Shelf life	5 years from date of production	
Storage conditions	SikaRoof® Base PVC must be stored indoors or under roof, in a dry location protected from direct sunlight, rain, frost and snow.	
Appearance / Colour	Aluminium connector of SikaRoof® Base PVC	Surface Smooth / polished with smoothened edges
		Color Light grey
	PVC base part of SikaRoof® Base PVC	Surface Smooth
		Color White or light grey

Dimensions	Dimension	Length (mm)	Width (mm)	Height (mm)
	Aluminium connector of SikaRoof® Base PVC	80	80	40
	PVC base part of SikaRoof® Base PVC	160	150	6
Weight	310 (± 10 %) g/set			

SYSTEM INFORMATION

System structure	Compatible with all types of exposed Sarnafil® and Sikaplan® PVC membranes. For usage on a single ply roofing system, the thermal insulation layer needs to have sufficient strength to transfer the compressive load to the substrate without significant deformation. In case of mineral wool insulation, a rigid cover board is recommended (according to the load).
-------------------------	--

APPLICATION INFORMATION

Ambient air temperature	-20 °C min. / +60 °C max.
Substrate temperature	-30 °C min. / +60 °C max.

BASIS OF PRODUCT DATA

All technical data stated in this Product Data Sheet are based on laboratory tests. Actual measured data may vary due to circumstances beyond our control.

FURTHER DOCUMENTS

Loading capacity is related to the substrate (roof build-up).

Roof build up with thermal insulation:
The max loading capacity for the SikaRoof® Base PVC is related to the compressive strength of the thermal insulation. The thermal insulation must have a sufficient compressive strength to carry the additional long-term point load from a single SikaRoof® Base PVC.

Roof build up without thermal insulation on concrete or plywood:

A maximum load of 200kg is permitted.
(Suitably qualified structural engineer must be responsible for the determination of the maximum admissible point load on Concrete or plywood roof build-up).

Roof slope maximum 5 %.

IMPORTANT CONSIDERATIONS

For projects with roof slopes above 5 % contact Sika technical person.
SikaRoof® Base PVC is only for point loads (downwards force) and not for uplift force.

ECOLOGY, HEALTH AND SAFETY

REGULATION (EC) NO 1907/2006 - REACH

This product is an article as defined in article 3 of regulation (EC) No 1907/2006 (REACH). It contains no substances which are intended to be released from the article under normal or reasonably foreseeable conditions of use. A safety data sheet following article 31 of the same regulation is not needed to bring the product to the market, to transport or to use it. For safe use follow the instructions given in this product data sheet. Based on our current knowledge, this product does not contain SVHC (substances of very high concern) as listed in Annex XIV of the REACH regulation or on the candidate list published by the European Chemicals Agency in concentrations above 0.1 % (w/w).

PROTECTIVE MEASURES

Fresh air ventilation must be ensured, when working (welding) in closed rooms.

Local safety regulations must be observed.

TRANSPORTATION CLASS

The product is not classified as hazardous good for transport.

DISPOSAL

The material is recyclable. Disposal must be according to local regulations. Please contact your local Sika sales organization for more information.

APPLICATION INSTRUCTIONS

APPLICATION METHOD / TOOLS

SikaRoof® Base PVC must always be installed perpendicular to the expected shear force. The side of the welding edge has to be selected in such a way as to allow for tension forces only in the SikaRoof® Base PVC. The welding edge of the SikaRoof® Base PVC is welded to the Sarnafil® or Sikaplan® PVC membrane by electric hot air welding equipment, such as manual hot air welding guns and pressure rollers.

Recommended type of equipment: Leister Triac PID (manual welding).

The equipment is fastened to the aluminium connector of SikaRoof® Base PVC using fasteners or rivets as recommended by the equipment supplier.

APPLICATION

Installation works must be carried out only by Sika instructed and approved roofing contractors.

Temperature limits for the installation of the SikaRoof® Base PVC:

- Substrate temperature: -40 °C min. / +60 °C max.
- Ambient temperature: -20 °C min. / +60 °C max.

Installation of some ancillary products, e.g. cleaners is limited to temperatures above +5 °C. Please observe information given by Product Data Sheets.

Special measures may be compulsory for installation below +5 °C ambient temperature due to safety requirements in accordance with national regulations.

LOCAL RESTRICTIONS

Note that as a result of specific local regulations the declared data and recommended uses for this product may vary from country to country. Consult the local Product Data Sheet for exact product data and uses.

LEGAL NOTES

The information, and, in particular, the recommendations relating to the application and end-use of Sika products, are given in good faith based on Sika's current knowledge and experience of the products when properly stored, handled and applied under normal conditions in accordance with Sika's recommendations. In practice, the differences in materials, substrates and actual site conditions are such that no warranty in respect of merchantability or of fitness for a particular purpose, nor any liability arising out of any legal relationship whatsoever, can be inferred either from this information, or from any written recommendations, or from any other advice offered. The user of the product must test the product's suitability for the intended application and purpose. Sika reserves the right to change the properties of its products. The proprietary rights of third parties must be observed. All orders are accepted subject to our current terms of sale and delivery. Users must always refer to the most recent issue of the local Product Data Sheet for the product concerned, copies of which will be supplied on request.

Sika India Pvt. Ltd.

620, Diamond Harbour Road
Commercial Complex II
Kolkata - 700 034
West Bengal, India

Contact:

Phone: +91 33 2447 2448
Fax: +91 33 2397 8688
info.india@in.sika.com
www.sika.in



Product Data Sheet

SikaRoof® Base PVC

April 2023, Version 01.01
02094501115000011

SikaRoofBasePVC-en-IN-(04-2023)-1-1.pdf